

Light Adjustable Lens

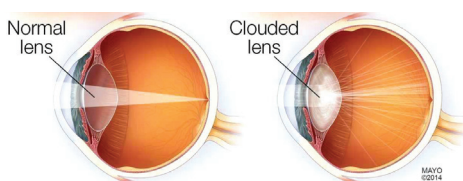


The First and Only Lens
Adjusted Specifically
For You AFTER
Cataract Surgery

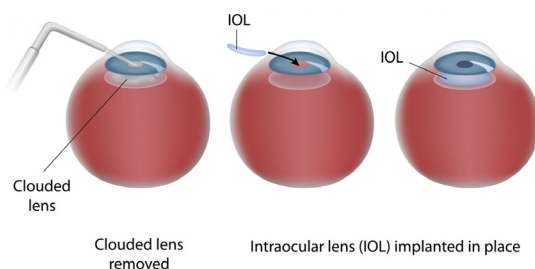
RXSIGHT 

What You Need to Know About Cataracts and Cataract Surgery

A cataract occurs when the natural, crystalline lens in your eye becomes cloudy and hard, darkening and blurring your vision and making it difficult to see. Cataracts are one of the leading causes of vision impairment and are a natural part of the aging process.



The only treatment for cataracts is to remove the cloudy natural lens and replace it with a new artificial 'intraocular lens' or IOL. Cataract removal surgery is the most common procedure in the world and is one of the most successful procedures performed today.



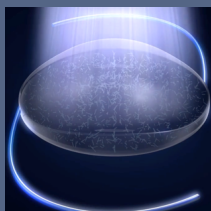
Cataract surgery can also offer the opportunity to correct other visual problems you may experience such as myopia (nearsightedness), hyperopia (farsightedness), astigmatism (irregularly shaped lens) or presbyopia (diminishing ability to focus with age).

Selecting the Right IOL

Your eye doctor uses pre-surgery eye measurements to estimate the power and type of IOL he or she thinks will provide you with the best vision after surgery.

Despite the number of measurements used to select the IOL and predict the visual outcome for a patient, it is still just an estimate. And because every eye heals slightly differently after surgery, getting 'close' to the predicted outcome is often the best result a patient can expect. If the visual target is not achieved, this can only be corrected by glasses, contacts, additional surgery, or by lens removal and replacement.

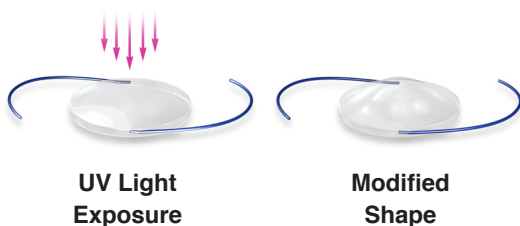
Now, for the first time ever, you can set your worries aside! RxSight's Light Adjustable Lens is the only IOL that enables you and your doctor to design, trial and customize your vision after cataract surgery. Adjustability takes cataract surgery to the next level by giving you a lens customized specifically for your eyes!



In a FDA study of 600 subjects, those who received the Light Adjustable Lens were twice as likely (as those who received a standard monofocal IOL) to achieve 20/20 vision without glasses.

RxSight's Light Adjustable Lens

The Light Adjustable Lens is made of a special photo-sensitive material that changes the power of your implanted lens in response to UV light, increasing the likelihood that you will achieve your desired vision after cataract surgery.



If you select the Light Adjustable Lens, the first step is to have your cataract safely removed and the adjustable IOL implanted. The cataract removal and IOL implantation procedure are the same as if you selected a non-adjustable IOL.

What is unique about the Light Adjustable Lens is that, after your eye heals, you return to your eye doctor to have your vision tested during a routine eye exam. Based on this exam, you and your eye doctor will select a custom prescription for your adjustable lens based on your own eyes and unique lifestyle requirements.



To receive the light treatment, you will be placed in front of RxSight's Light Delivery Device, which will non-invasively deliver the UV light to your Light Adjustable Lens.

Between 2 and 4 total light treatments, each lasting approximately 90 seconds and separated by approximately 3 days, are required. The total number of light treatments is based on achievement of you and your doctor's desired outcome. For the first time ever, you can have confidence that your result will be just how you want to see the world.

Light Treatment Schedule	
Initial Light Treatment	Approximately 2-3 weeks after surgery
Secondary Light Treatment	Approximately 3 days after initial light treatment
Additional Light Treatments (if required)	Approximately 3 days after each prior light treatment

UV Light

The sun is the primary natural source of UV light, and artificial sources of UV light are safely used in many medical and ophthalmic treatments. However, as exposure to indoor and outdoor sources of UV light can cause uncontrolled changes to the Light Adjustable Lens – you will be provided with UV protective glasses to wear during all waking hours (from time of lens implantation until after the last light treatment is completed).



Glasses may be removed when sleeping, and may be temporarily removed when showering, washing your face, or applying eye drops as long as you are not exposed to direct sunlight.

24 hours after the final light treatment, no further changes can be made to the implanted Light Adjustable Lens, and you can remove the UV protective glasses and enjoy your custom vision!



Light Adjustable Lens Technology

The U.S. Food and Drug Administration has approved the Light Adjustable Lens and Light Delivery Device for patients with pre-existing astigmatism of 0.75 diopters or more who are undergoing cataract surgery.

Other commercially available IOLs may be available for the treatment of your cataracts and your doctor will help you determine which lens is right for you.

Light Adjustable Lens



Light Delivery Device



Ask your doctor to explain the possible risks and benefits of cataract surgery. For risks and benefits specifically related to the RxSight's Light Adjustable Lens, please see the RxSight Patient Information Brochure which will be provided to you.

RXSIGHT

